

How to Properly Turn On and Off an Acetylene Tank

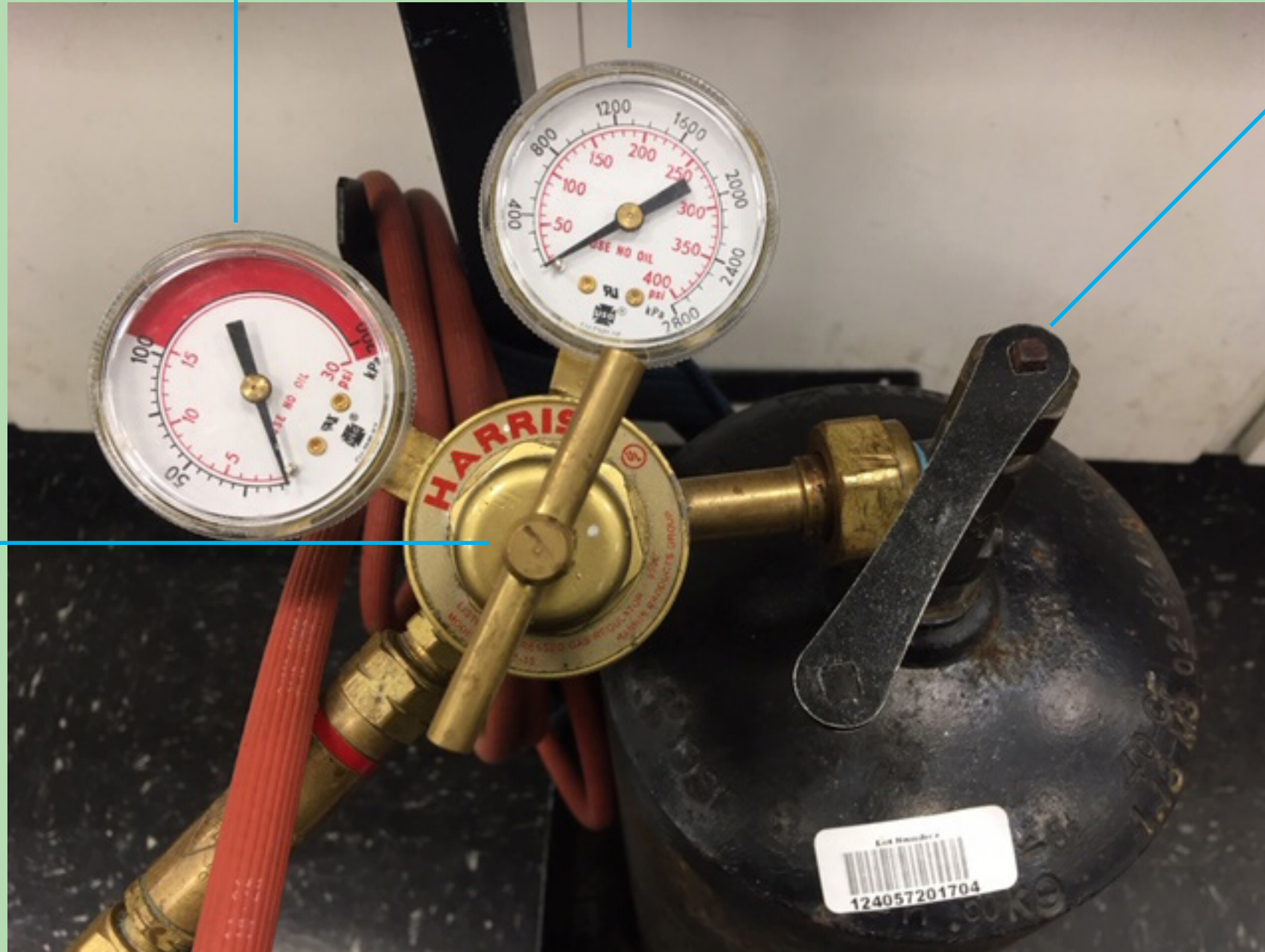


Pressure Gauge

Working Pressure (left); Cylinder Pressure (right)

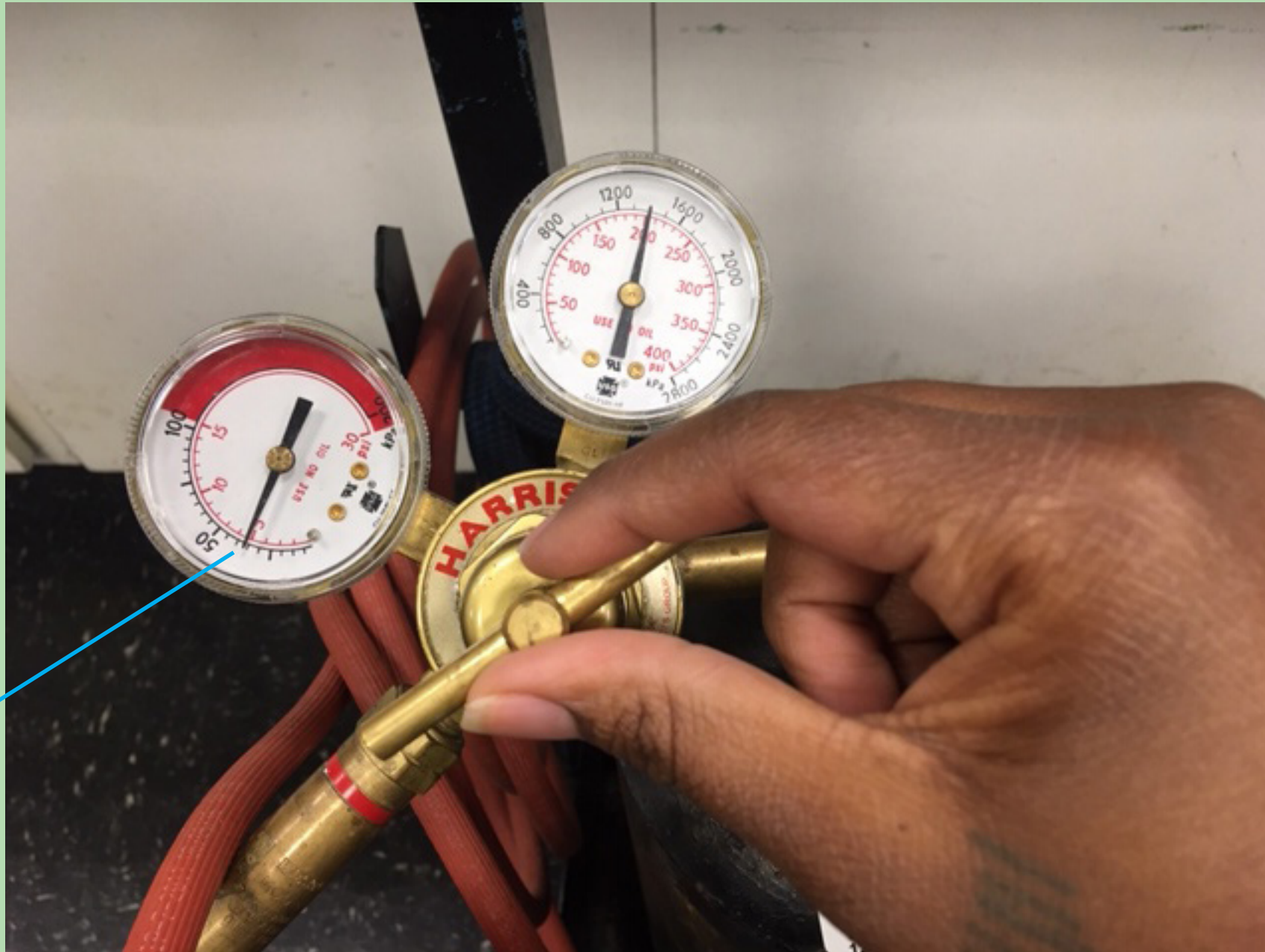
Regulator Valve

Torch Key





Turn the tank key 1/4 to the left to open valve. (Lefty Loosey Righty Tightly)
The cylinder pressure shows how much gas is inside the tank



5 psi

Turn the regulator valve to the right to put pressure on the line. Turn the valve until the pressure gauge reaches **5 psi**.



Turn tank key to the right to shut off gas/close regulator.
(Lefty Loosey Righty Tightly)



Put torch tip near ventilator to release the rest of the gas from inside of the line.



Turn regulator valve 1/2 to the left to release pressure from regulator.
(Lefty Loosey Righty Tighy)

How to Properly Turn On and Off an Oxygen Acetylene Tank





Turn valve 1/4 to the left on acetylene. (Lefty Loosey Righty Tightly)
The cylinder pressure shows how much gas is inside the tank.

5 psi



Turn the regulator valve to the right to put pressure on the line of the acetylene.
Turn the valve until the pressure gauge reaches **5 psi**.

This oxygen tank is almost empty



Turn the valve 1/4 to the left to open oxygen. (Lefty Loosey Righty Tightly)
The cylinder pressure shows how much oxygen is inside the tank.



30 psi

Turn the regulator valve to the right to put pressure on the line of the oxygen.
Turn the valve until the pressure gauge reaches **30 psi**.



Turn valve to the right to shut off gas/close regulator.
(Lefty Loosey Righty Tightly)



Turn valve to the right to shut off oxygen/close regulator.
(Lefty Loosey Righty Tightly)



Put torch tip near ventilator to release the rest of the gas and oxygen from inside of both lines.



Turn regulator valve 1/2 to the left to release pressure from regulator on both acetylene and oxygen tank. (Lefty Loosey Righty Tighy)